



MS-1 WABTEC V228 ENGINE CONTROLLER

Main features

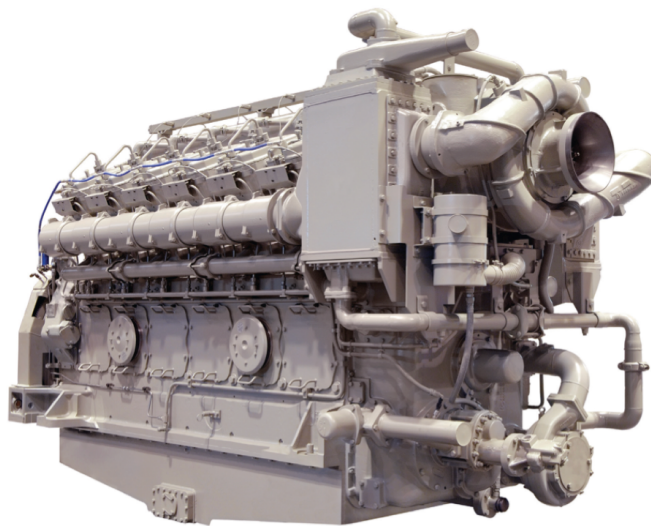
- ▶ Engine Control, Monitoring & Protection
- ▶ Control Transfer Bridge – Engine Room
- ▶ Event history up to 4000 records
- ▶ Display Trends of up to 8 signals
- ▶ Recording and visualization of trends
- ▶ Management of the required electric pumps
- ▶ Fuel Consumption Management
- ▶ Engine Start & Stop from the display
- ▶ Managements of EGU feeds
- ▶ Modbus communication with Woodward 723
- ▶ On-screen Exhaust Gas Temperatures
- ▶ On-screen Woodward Alarm Codes
- ▶ Up to 4 Emergency Stops
- ▶ Gearbox signals included

Pressures

- ▶ LubOil
- ▶ Stbd Manifold Inlet Air
- ▶ LT Water
- ▶ Fuel Oil
- ▶ Starting Air

Temperatures

- ▶ LT Water
- ▶ HT Water Outlet
- ▶ Cylinders Exhaust Gas
- ▶ FuelOil



Other signals

- ▶ Oil Filter Clogged
- ▶ Air Filter Clogged
- ▶ Diesel Filter Clogged
- ▶ LubOil Level
- ▶ Water Level
- ▶ Emergency Stops

Fuel Consumption

- ▶ Daily
- ▶ Total
- ▶ Instantaneous
- ▶ Per Nautic Mile